

DRAWING NUMBER
51/107

A PLANNED UNIT DEVELOPMENT PLAT NO. 4 OF BAY WINDS PUD

BEING A SUBDIVISION OF LAND IN SECTION
27, TOWNSHIP 47 SOUTH, RANGE 41 EAST BEING A
REPLAT OF PORTIONS OF TRACTS 4, 5, 6, 25, 26 & 32
FLORIDA FRUITLANDS COMPANY'S SUBDIVISION
NO. 2 (P.B. 1, PG. 102.)

PALM BEACH COUNTY, FLORIDA

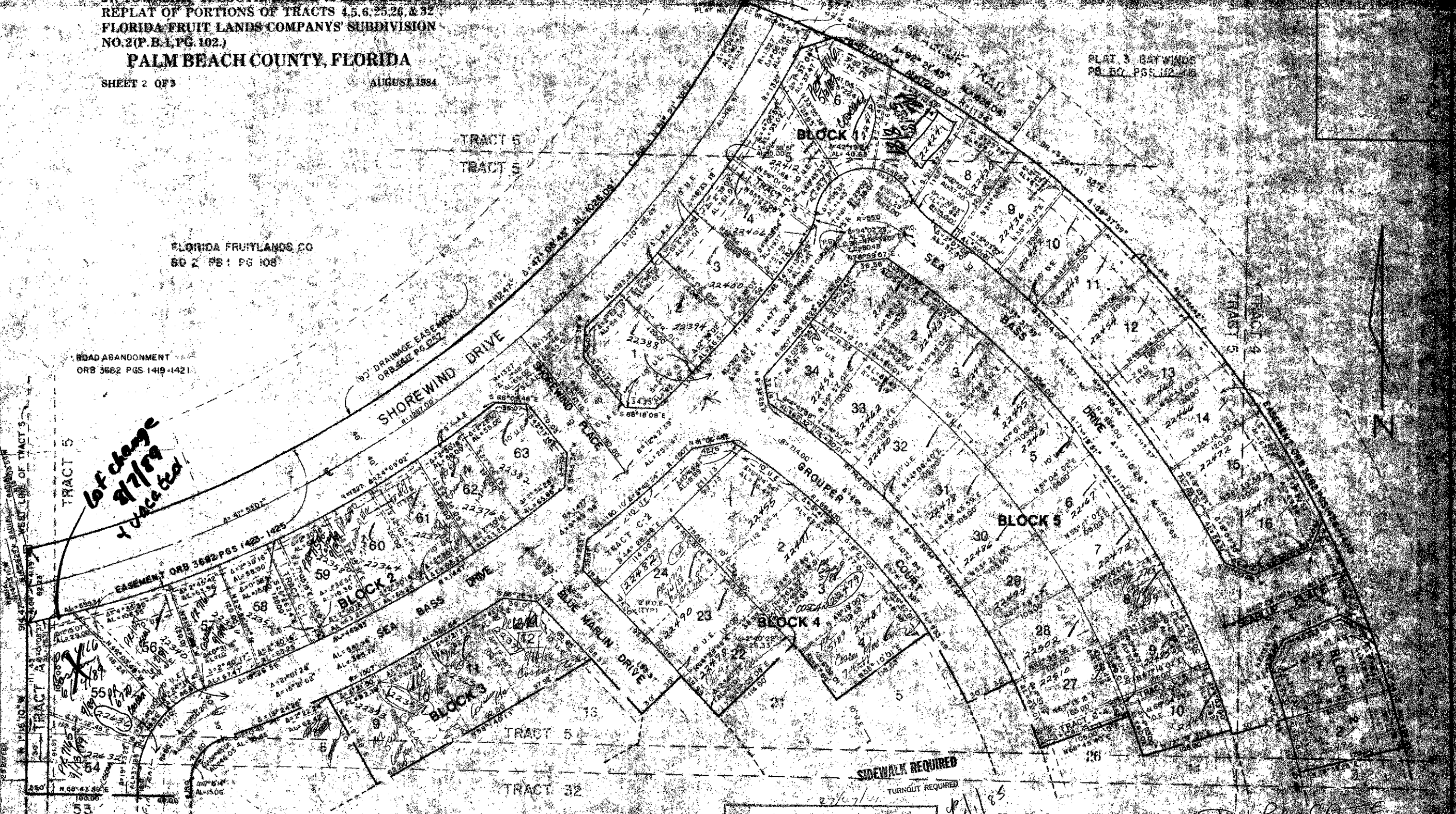
SHEET 2 OF 3

AUGUST 1984

FLORIDA FRUITLANDS CO
60 2 PG 1 PG 108

ROAD ABANDONMENT
ORB 3562 PGS 1419-1421

PLAT 3 BAY WINDS
PG 57 PGS 112-116



*lot change
8/7/84
+ 1/4 acre*

SUBDIVISION # *Bay Winds*
 BOOK *51* PAGE *107*
 PLAT NO. *4* OF *BAY WINDS PUD*
 TRACT NO. *5*
 PLOT NO. *1*
 ROAD NAME *BAY WINDS*

GRAPHIC SCALE
 1" = 60'

Field Book No. *51*
 Design *J. PRYTS*
 Drawn *B. WILLIAMS*
 Checked *B. WILLIAMS*

ROBERT OWEN & ASSOCIATES, INC.
 ENGINEERS - PLANNERS - SURVEYORS
 WEST PALM BEACH
 FLORIDA

PLAT NO. 4
 OF
 BAY WINDS PUD

51/107

0201023

DRAWING NUMBER

DRAWING NUMBER

DRAWING NUMBER